

EXCLUSIVELY OFFERED FOR SALE BY



# 2019 Dassault Falcon 2000 LXS

MSN 340 – HB –IBJ



**2019 Falcon 2000 LXS** – MSN 340 – HB-IBJ

## FALCON 2000 LXS

The **Falcon 2000 LXS** combines speed, range, and comfort with its Pratt & Whitney Canada PW308C engines, achieving a remarkable cruise speed of Mach 0.80.

Its aerodynamic design and lightweight construction using composite materials ensure notable energy efficiency, reducing fuel consumption and CO2 emissions. Equipped with an advanced digital flight control system, it offers precise maneuverability and exceptional stability.

Onboard, up to 10 passengers can enjoy a spacious and luxurious cabin, featuring ergonomic leather seats and state-of-the-art entertainment equipment. Versatile, it can undertake transcontinental or short-haul flights, and its ability to operate from short runways provides unparalleled flexibility to reach even the most sought-after destinations, even when major airports are unavailable.



### EXTERIOR

- Original Paint
- Matterhorn White with blue stripes along fuselage



## HIGHLIGHTS

- 1,675 TSN – 1,066 CSN
- Engines on ESP Platinum
- APU on MSP Gold
- 10 PAX Configuration
- Synthetic Vision System (SVS)
- On CAMP
- EASA Compliant
- Based in Switzerland
- One Owner / One Operator Since New

**2019 Falcon 2000 LXS** – MSN 340 – HB-IBJ





## 2019 Falcon 2000 LXS MSN 340 – HB-IBJ

### AIRFRAME

- 1,675 TSN – 1,066 CSN

### ENGINES

Pratt & Whitney PW308C – On ESP Platinum

#1: s/n PCE-CF0800 – 1,675 TSN – 1,066 CSN

#2: s/n PCE-CF0820 – 1,669 TSN – 1,063 CSN

### APU

Honeywell GTCP36-150 (F2M) – On MSP Gold

s/n P-768 – 1,409 TSN – 2,107 CSN







2019 Falcon 2000 LXS MSN 340 - HB-IBJ





## AVIONICS

Honeywell Primus Epic Suite (EASy II, 4<sup>th</sup> Certification)

### Communication

- Dual Honeywell TR-866B VHF Data Radio (VDR) modules
- Single Honeywell TR-866B VHF mode 2 Data Radio (VDR) module
- Dual Rockwell Collins HF-9000 Radios
- Single Honeywell SELCAL System
- Triple Honeywell AV-900 Digital Audio Control Panel
- Single ELTA ADT-406 Emergency Locator Transmitter (ELT)
- Single Honeywell Communications Management Function (CMF)
- Single Miltope TP-4840 Flight Deck Printer
- Aircell Axxess II w/ Wifi Functionnality
- GoGo Business Aviation Iridium Satcom System for Cockpit / Cabin Communication and Cockpit Datalink Services

### Navigation

- Dual Honeywell NV-857B Navigation modules
- Dual Honeywell DF-855 ADF modules
- Dual Honeywell GPS (SBAS Capable) modules
- Dual Honeywell FMS
- Single Honeywell DL-700 Data Management Unit (DMU)
- Single Honeywell Electronic Jeppesen Charts Function
- CPDLC (ATN-B1 & FANS 1/A +)

### Pulse

- Single Honeywell Primus 880 Weather Radar
- Dual Honeywell DM-855 DME Modules
- Dual Honeywell XS-857A mode S Transponder Modules (ATC)
- ADS-B OUT (Standard) Honeywell
- Single Honeywell RT-300 Receiver/Transmitter
- Single ACCSS TCAS 3000 (TCAS II w/ Change 7.1)
- Single Honeywell GP-600 Guidance Panel

### Flight Control

- Dual Honeywell MAU-920 Modular Avionics Units (MAU)
- Quadruple Honeywell DU-1310 Displays Units (DU)
- Single Honeywell Synthetic Vision System (SVS)
- Single Honeywell Autothrottle (AT) / Thrust Director (TD) System

### Reference Sensors

- Dual Honeywell AZ-200 micro Air Data Modules (ADM)
- Single Smiths Stand-by Magnetic Compass
- Single Meggitt MK2 Secondary Flight Displays (SFD)
- Single Honeywell CMC-901 Central Maintenance Computer (CMC)
- Single Falcon BroadCast System
- Dual Honeywell Laseref V Micro Inertial Reference Units (IRU)

### Recording

- Single Honeywell 2-Hour Solid State Cockpit Voice Recorder (SSCVR) with independent Power Supply
- Single Honeywell Solid-State Flight Data Recorder (SSFDR)
- Single Altair Data Transmission Unit (DTU)

### Monitoring

- Single Honeywell EGPWS Module

### Miscellaneous Systems

- Dual CMC CMA-1310 Electronic Flight Bags (EFB)



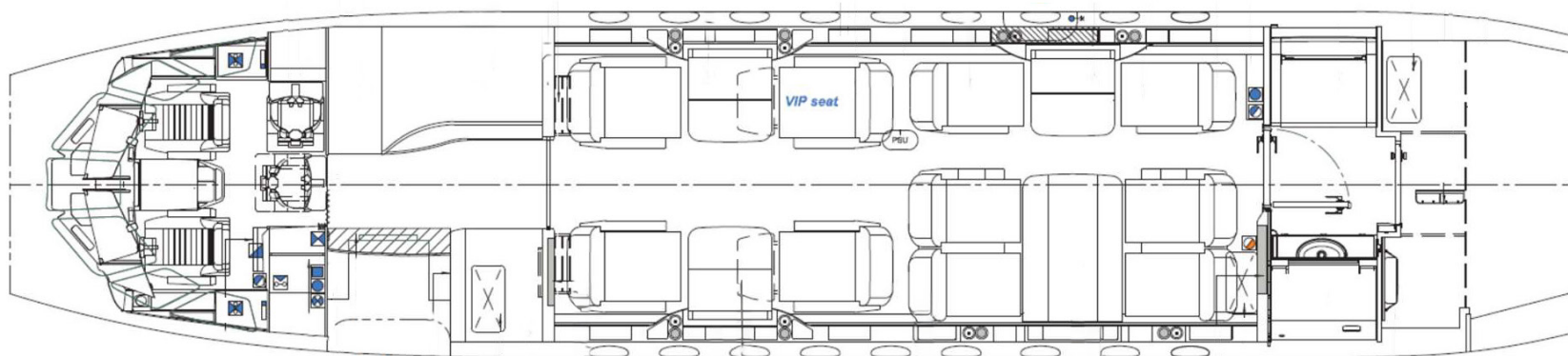


## 2019 Falcon 2000 LXS MSN 340 – HB-IBJ

### INTERIOR

<b>Cabin layout</b>	10-Passenger Configuration
<b>Forward Cabin</b>	Four (4) Single Club Seats
<b>Aft Cabin</b>	Four (4) Dinning Group Opposite Two (2) Single Seats
<b>Galley</b>	Forward Galley Includes A Single TIA Microwave Oven & Dynamo Coffee Brewer

<b>Lavatory Location</b>	Aft Cabin
<b>Third Crew Seat</b>	Fwd Cabin w/ Fwd Crew Closet





## ENTERTAINMENT

### Falcon Cabin HD+ Rockwell Collins

#### Controls

- Single 22" Widescreen HD LED Backlit Fwd Monitor

#### Video Display

- Single 22" Widescreen HD LED Backlit Monitor (FWD Bulkhead)
- Single 22" Widescreen HD LED Backlit Monitor (AFT Bulkhead)
- 8 Plug-In 10.6" Widescreen HD LED Backlit Touch Screen Monitor With Swing Arm
- Single iPad & iPod Remote Control
- HDMI Interface / USB Charging Port
- Cabin Stereo Headset (Noise Cancelling) (Standard) Bose
- Alto Sound System
- Airshow 3D Interactive Map
- Single "Dual" Blu-Ray Player
- Dual USB port for Audio/Video on Demand (AVoD)

#### AC Power

- Single 115V 115 VAC 60HZ 2000VA Inverter KGS Electronics SS200 (x) (9 Outlets)



2018 Falcon 2000 LXS - MSN 340 - HB-IBJ





**2019 Falcon 2000 LXS** MSN 340 - HB-EU





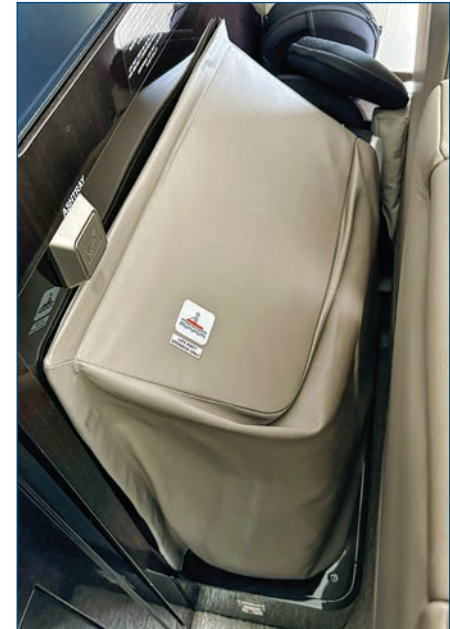
2019 Falcon 2000 LXS MSN 340 - HB-IBJ







**2019 Falcon 2000 LXS** MSN 340 - HB-IBJ







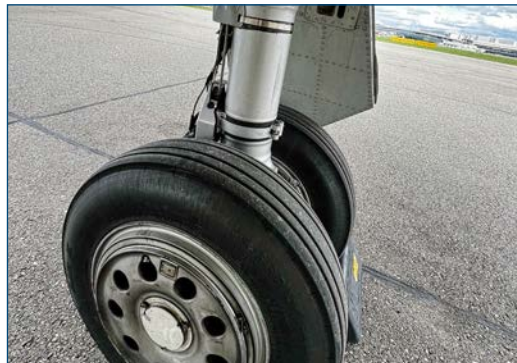
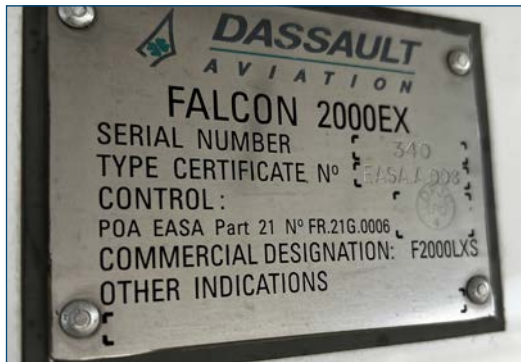
## MAINTENANCE

Next 24 MOS	due January 2025 or 2,924 FH
Next 36 MOS	due January 2025 or 3,450 FH
Next 1C (72 MOS)	due September 2024
Next 2C (144 MOS)	due September 2030

## NOTES

### CAMP Maintenance Tracking Program

In-Service Date: January 28th, 2019





# 2019 Dassault Falcon 2000 LXS

MSN 340 – HB –IBJ

Specifications and/or descriptions are provided as introductory information. They do not constitute representations or warranties.  
Accordingly, you should rely on your own inspection of the aircraft.

Aircraft subject to prior sale, lease, or withdrawal from the market without notice.



By Appointment to H.S.H. the Sovereign Prince of Monaco

Follow us on

